

Verification Report



File Name: Upitnik-20180301.mxf

Verified By : AUDIO FULL

Started At : 04 Mar 18, 5:59:04 PM

Completed At : 04 Mar 18, 6:37:12 PM

Scheduled By : Anonymous user

Result: Failure (File has 112 errors, 0 warnings)

File Size : 15740.10 MB (16,504,688,892 bytes)

Table of Contents

1. Verification Summary

2. Content Summary

Container

Video

Audio

3. Content Hierarchy

4. Compact Report

5. Error Timeline

6. Report Statistics

7. MXF

8. DV Video (ID=512,Parent=2)

9. BWF Audio (ID=768,Parent=2)

Information

Audio Quality Errors

10. BWF Audio (ID=1024,Parent=2)

Information

Audio Quality Errors

1. Verification Summary

C:\Users\Administrator\Desktop\AUDIO\Upitnik-20180301.mxf

Content Verified	Upitnik-20180301.mxf	Status	Finished
Test Plan Used	AUDIO FULL	Progress	100%
Format	MXF	Duration	2288 Seconds
Number of errors	112	Allocated Cores	4
Number of warnings	0	BATON version	Standard Edition 7.0.1-P3
Task Created on	04 Mar 18, 5:21:54 PM	Platform	Windows Server 2012 version 6.2 (build 9200) (AMD64)
Priority	Immediate	Task Id	00000161f1d1ce21e964e1d600c000a800340064
Checker	127.0.0.1@9000	File Operations	move to \\192.168.52.95\IsilonArhiv\Upitnik-20180301.mxf

2. Content Summary

Container

Format	MXF
Video tracks	1
Audio tracks	Actual Tracks: 2

Video

Format	DV Video
---------------	----------

Audio

BWF Audio (ID=768,Parent=2)

Format	BWF Audio	Sample rate	48000 Hz
Bit rate	1536.0 Kbps	Channels	2

BWF Audio (ID=1024,Parent=2)

Format	BWF Audio	Sample rate	48000 Hz
Bit rate	1536.0 Kbps	Channels	2

3. Content Hierarchy

Format	ID	Errors	Warnings
MXF		0	0
Source Package ID = 2			
DV Video (ID=512,Parent=2)	2-512	0	0
BWF Audio (ID=768,Parent=2)	2-768	109	0
BWF Audio (ID=1024,Parent=2)	2-1024	3	0

4. Compact Report

Container | MXF

Check	Status	Information
Video Track Count	Passed	
Audio Track Count	Passed	
DolbyE Track Count	Passed	
Audio and Video PIDs	Passed	
Run-In	Passed	Not Present
Random Index Pack	Passed	Present
Operational Pattern	Passed	OP1a
Index Table	Passed	Index Table : Present
Video Track Properties	Passed	
Audio Track Properties	Passed	
Conformance	Passed	

Audio

Check	Status	BWF Audio (ID=768,Parent=2)	BWF Audio (ID=1024,Parent=2)
Bits per Sample	Passed	16	16
LFE Channels	Passed	0	0
Audio Channels	Passed	2	2
Bit Rate	Passed	1536 Kbps	1536 Kbps
Sampling Frequency	Passed	48000 Hz	48000 Hz
Silence	Failed	5 Error(s)	2 Error(s)
Level Mismatch	Passed	Not Present	Not Present
DialNorm-Loudness Mismatch	Passed		
Clipping	Passed		
Misplaced Channels	Passed		
Background Noise	Passed	Not Present	Not Present
Transient Noise	Passed	Not Present	Not Present
Loudness	Failed	96 Error(s)	1 Error(s)
Level	Passed	Average Level : [(0, -30.555 dBFS)]	Average Level : [(0, -99.0 dBFS)]
Wow and Flutter	Passed	Not Present	Not Present
Jitter Noise	Passed	Not Present	Not Present
High Frequency Noise	Passed	Not Present	Not Present
Overmodulation	Passed	Not Present	Not Present
PPM Meter	Passed		
Phase Mismatch	Passed	Not Present	Not Present

Dropout	Passed	Not Present	Not Present
Click	Failed	6 Error(s) Present	Not Present
Bitdepth Upconversion	Passed		
Repetitive Pattern	Passed	[(0, Not Present), (1, Not Present)]	[(0, Not Present), (1, Not Present)]
Echo	Failed	2 Error(s) Present	Not Present
Pop	Passed	Not Present	Not Present
Colored Noise	Passed		
Crackle	Passed	Not Present	Not Present
EAS Message	Passed	Not Present	Not Present
Audio Artifacts	Passed		
BWF Version		Info not found	Info not found
Conformance	Passed		

Video | DV Video

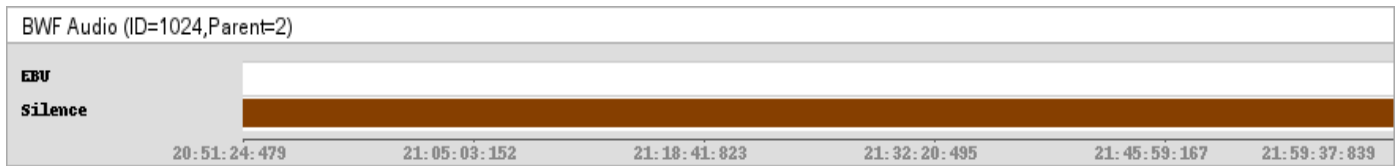
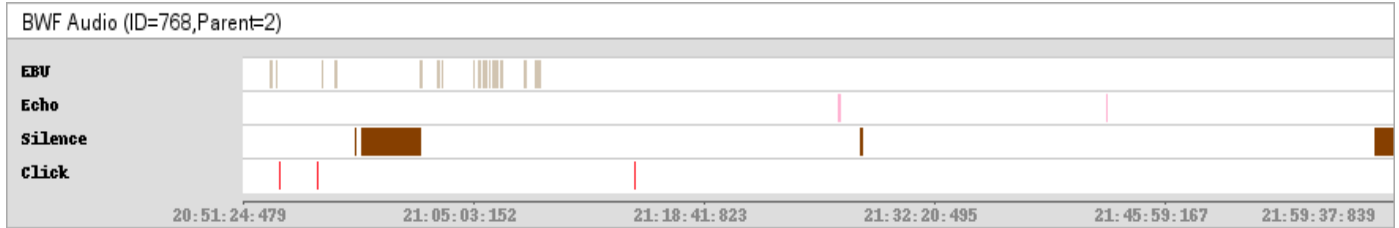
Check	Status	Information
Conformance	Passed	

Report Comments

No Comments or Ratings available

Timeline

5. Error Timeline



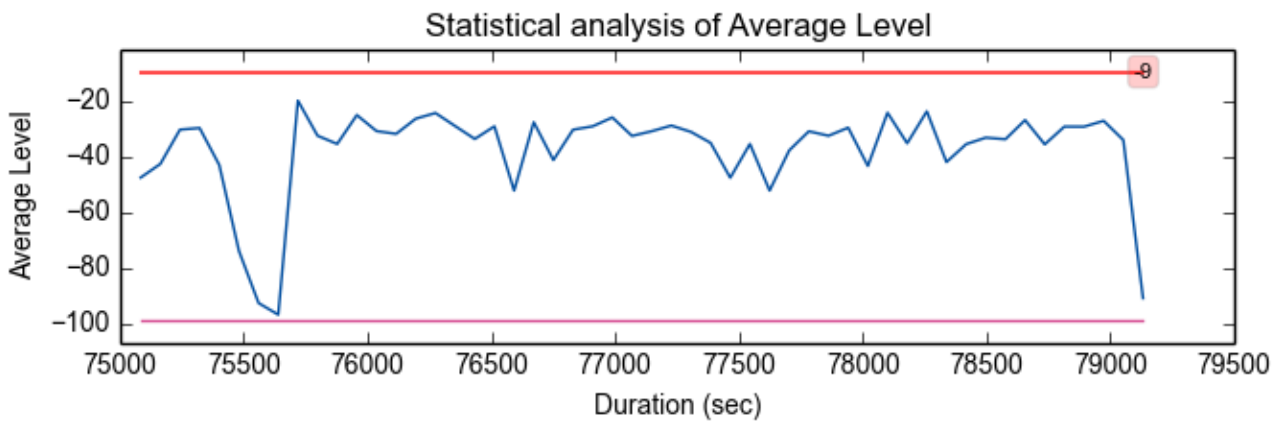
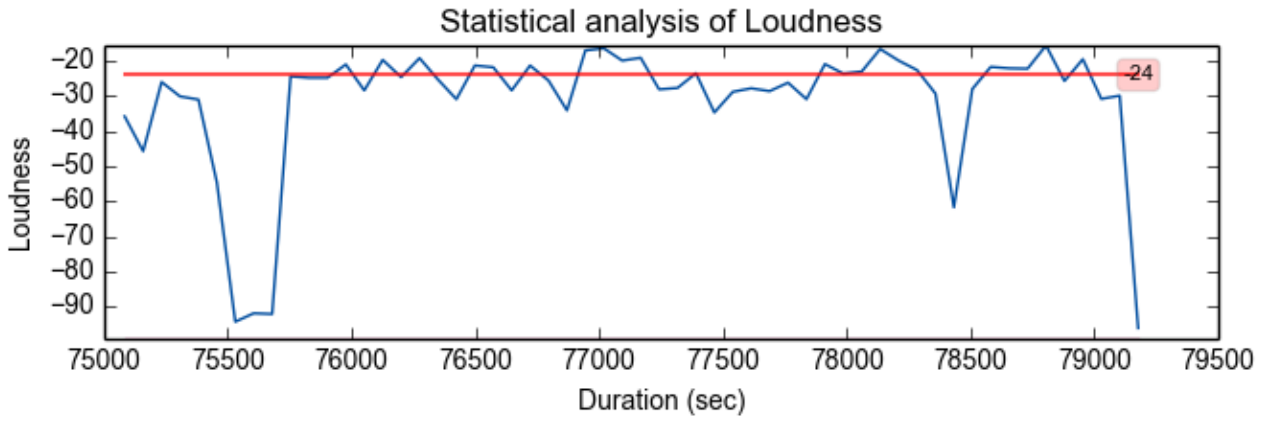
6. Report Statistics

Error Count

Audio Quality	112
---------------	-----

Audio Quality Items

EBU	97	Silence	7
Echo	2	Audio Click	6



Content Details

7. Container - MXF

No errors, no warnings

Information

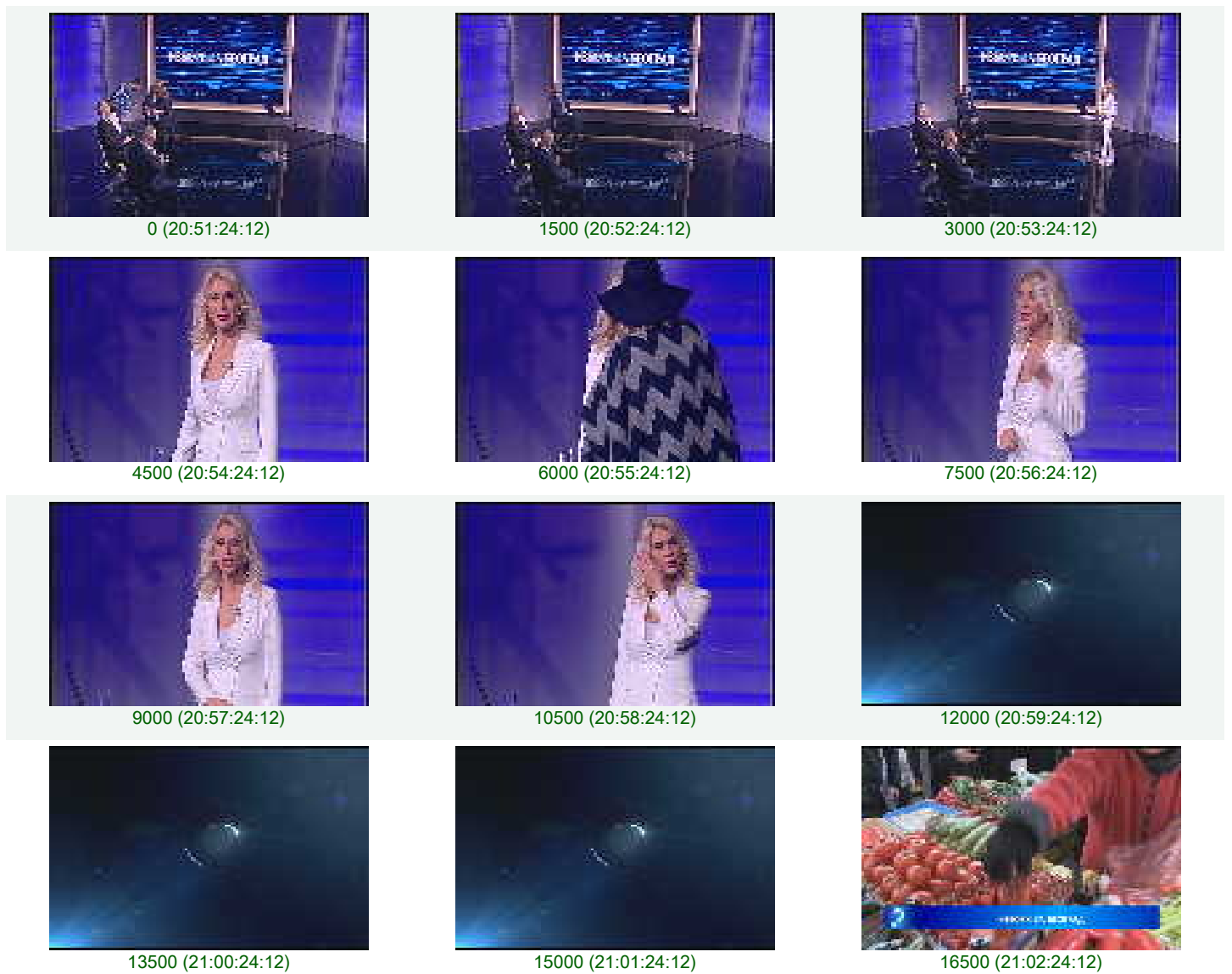
File Size	15.37 GB	
Number of Video Tracks	1	
Number of Audio Tracks	2	
Audio PID(s)	[768, 1024]	
Video PID(s)	512	
Number of DolbyE Tracks	0	
Operational Pattern	OP1a	
Random Index Pack	Present	
RunIn	Not Present	
Index Table	Present	
Dial Norm	0 dB	
Identification Set	Modification Date	2018-03-03 15:32:34.212
	Product Name	AirSpeed 5000
	Company Name	Avid Technology, Inc.
	Product Version	4.4.36.0.1
	Version String	AirSpeed 5000 V2.5
	Toolkit Version	4.4.36.0.3
	Product UID	00.00.00.00.00.00.00.00.00.00.00.00.00.00.00.00.00
	Platform	win32
Video Track Properties	Field Dominance	Field 1 first
	Sampled Topness	Field 2 upper
	Stored Height	288
	Stored Width	720
	Black Reference Level	16
	Chroma Format	4:1:1
	Display Aspect Ratio Width	16
	Display Aspect Ratio Height	9
	Edit Rate Numerator	25
	Edit Rate Denominator	1
	Essence Container Type	MXF-GC DV-DIF
	Video Essence Type	DV-based Video 25Mbps 625x50I
	Video Line Map 0	23
Video Line Map 1	335	
White Reference Level	235	

Display Width	720
Display Height	288
Transfer Characteristic	ITU-R BT470
Frame Layout	SEPARATE_FIELDS (1)
Signal Standard	1
Color Space	YUV

8. DV Video (ID=512,Parent=2)

No errors, no warnings

Video Preview

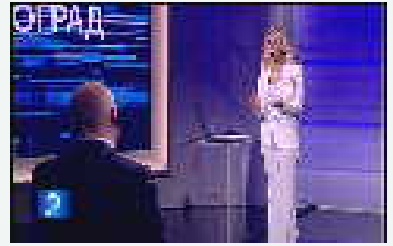




18000 (21:03:24:12)



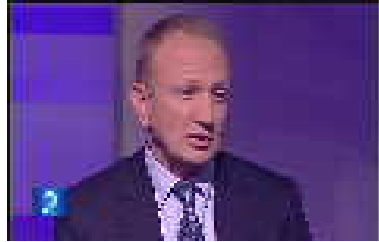
19500 (21:04:24:12)



21000 (21:05:24:12)



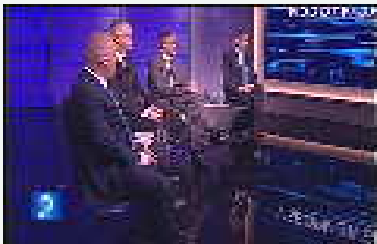
22500 (21:06:24:12)



24000 (21:07:24:12)



25500 (21:08:24:12)



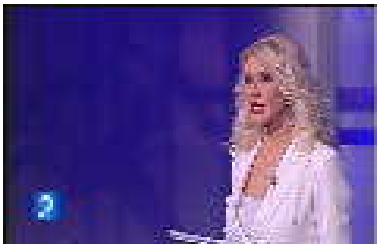
27000 (21:09:24:12)



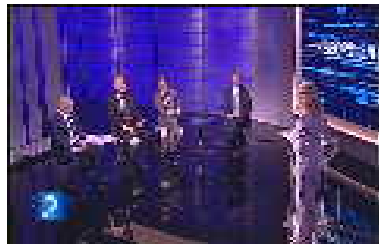
28500 (21:10:24:12)



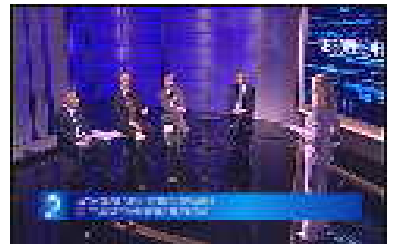
30000 (21:11:24:12)



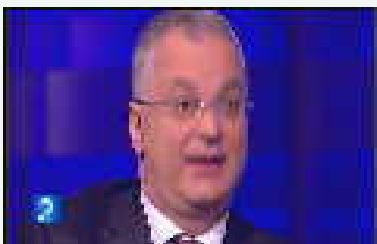
31500 (21:12:24:12)



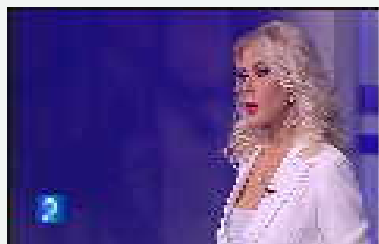
33000 (21:13:24:12)



34500 (21:14:24:12)



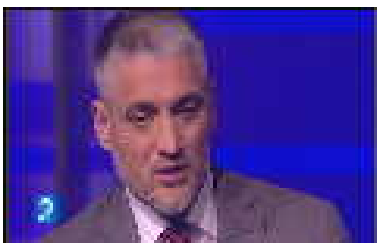
36000 (21:15:24:12)



37500 (21:16:24:12)



39000 (21:17:24:12)



40500 (21:18:24:12)



42000 (21:19:24:12)



43500 (21:20:24:12)



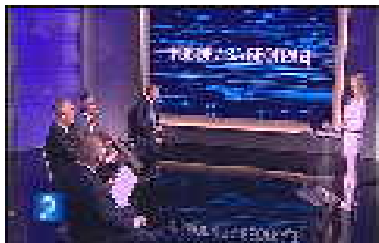
45000 (21:21:24:12)



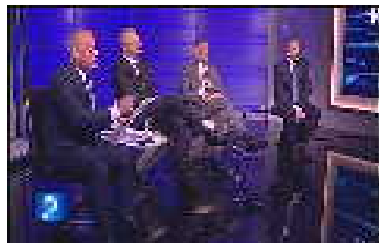
46500 (21:22:24:12)



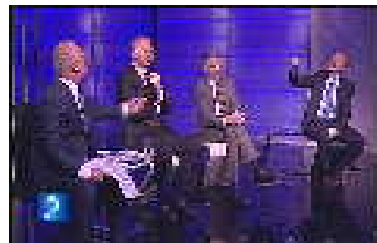
48000 (21:23:24:12)



49500 (21:24:24:12)



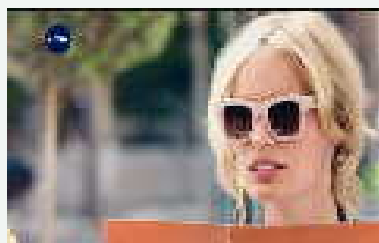
51000 (21:25:24:12)



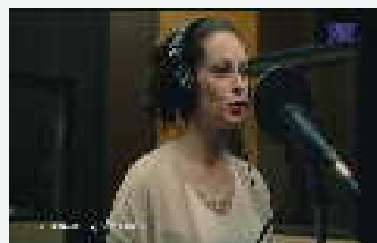
52500 (21:26:24:12)



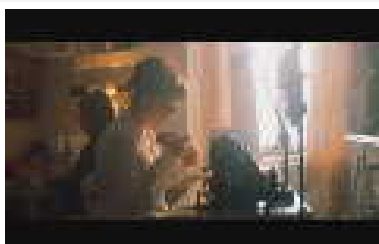
54000 (21:27:24:12)



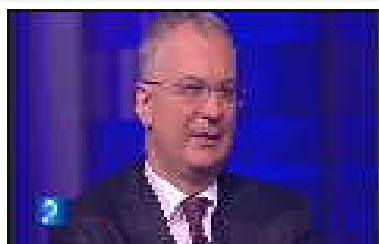
55500 (21:28:24:12)



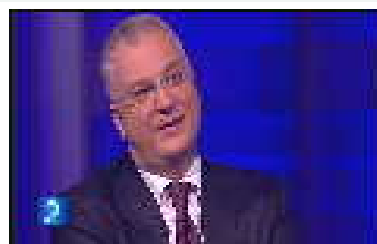
57000 (21:29:24:12)



58500 (21:30:24:12)



60000 (21:31:24:12)



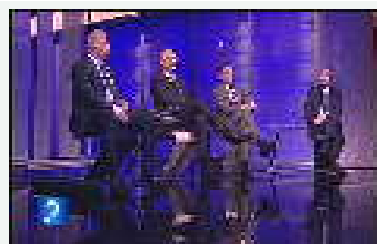
61500 (21:32:24:12)



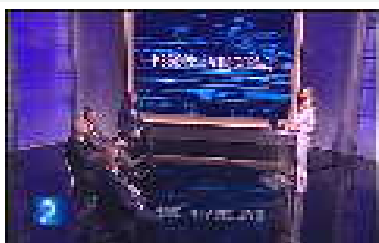
63000 (21:33:24:12)



64500 (21:34:24:12)



66000 (21:35:24:12)



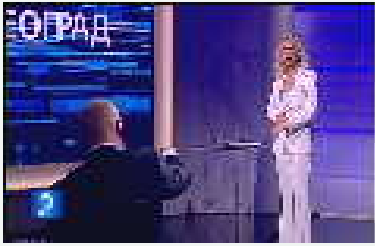
67500 (21:36:24:12)



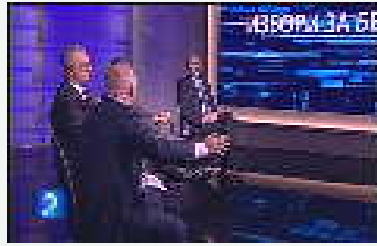
69000 (21:37:24:12)



70500 (21:38:24:12)



72000 (21:39:24:12)



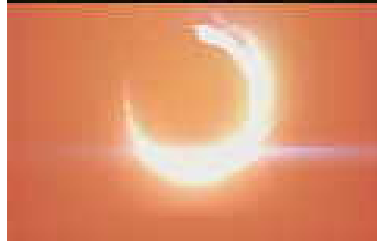
73500 (21:40:24:12)



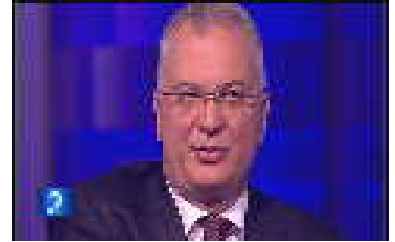
75000 (21:41:24:12)



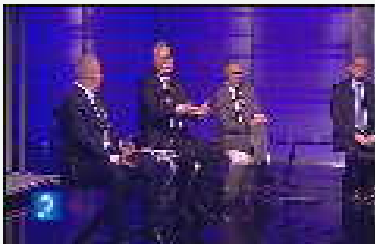
76500 (21:42:24:12)



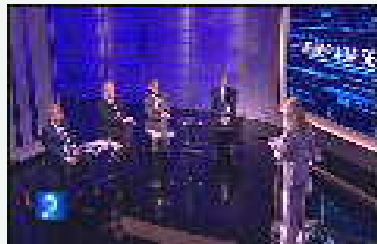
78000 (21:43:24:12)



79500 (21:44:24:12)



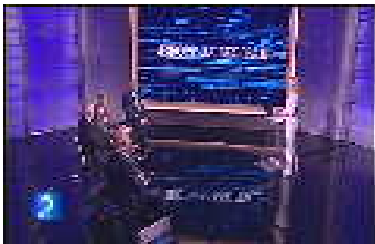
81000 (21:45:24:12)



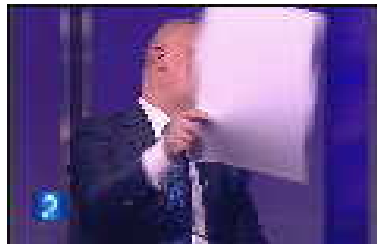
82500 (21:46:24:12)



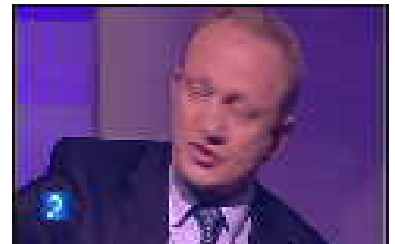
84000 (21:47:24:12)



85500 (21:48:24:12)



87000 (21:49:24:12)



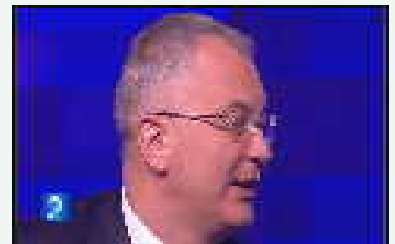
88500 (21:50:24:12)



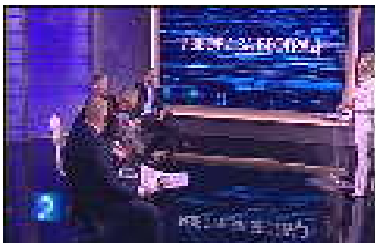
90000 (21:51:24:12)



91500 (21:52:24:12)



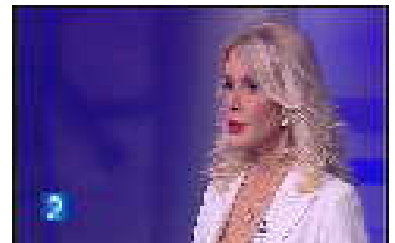
93000 (21:53:24:12)



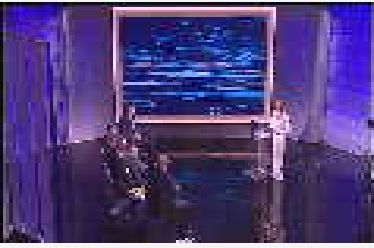
94500 (21:54:24:12)



96000 (21:55:24:12)



97500 (21:56:24:12)



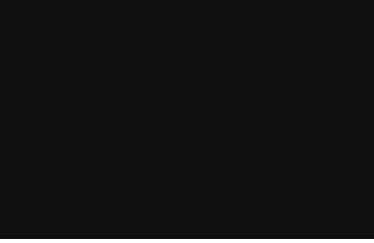
99000 (21:57:24:12)



100500 (21:58:24:12)



102000 (21:59:24:12)



102333 (21:59:37:20)

9. BWF Audio (ID=768,Parent=2)

109 errors, 0 warnings

Information

Sampling Frequency	48000 Hz			
Bit Rate	1536 Kbps			
Audio Channels	2			
LFE Channels	0			
Bits per sample	16			
Average Level	Channel	Level		
	0	-30.555 dBFS		
Phase Mismatch	Not Present			
Level Mismatch	Not Present			
Transient Noise	Not Present			
Wow and Flutter	Not Present			
Echo	Present			
Duration	01:08:13:360			
Pink Noise	Not Present			
White Noise	Not Present			
PPM Meter	Mode	Level		
	M6	5.94		
Audio Click	Present			
EAS Message	Not Present			
Max Momentary Loudness Level	-13.8 LUFS			
Max Short-term Loudness Level	-16.3 LUFS			
EBU Loudness	Program Loudness	Loudness Range	Start	End
	-22.5 LUFS	9.2 LU	20:51:24:480	21:59:37:834
Repetitive Pattern	Channel	Presence		
	0	Not Present		
	1	Not Present		

True Peak Level(EBU)	Channel	Level
	0	-7.3 dBTP
	1	-7.3 dBTP
Background Noise	Not Present	
Jitter Noise	Not Present	
Audio Clipping	Not Present	
Actual Channel Layout	Can't be determined	
High Frequency Noise	Not Present	
Overmodulation	Not Present	
Audio Dropout	Not Present	
Audio Pop	Not Present	
Audio Crackle	Not Present	
UMID	Info not found	
BWF Version	Info not found	

Audio Quality Errors

#		Description	Duration	Start	End	EBU Code
1	Serious	Audio Silence is detected in the stream, starting at time 20:58:47:14. Silence duration: 00:03:09:10. Specified criteria: Report as Serious if 'Silence during the audio' more than 00:00:01:500.	00:03:09:10	20:58:47:14	21:01:56:24	0078B
2	Serious	Audio Silence is detected in the stream, starting at time 21:58:27:08. Silence duration: 00:01:10:13. Specified criteria: Report as Serious if 'Silence in lead-out' more than 00:00:01:500.	00:01:10:13	21:58:27:08	21:59:37:21	0078B
3	Serious	Audio Silence is detected in the stream, starting at time 20:58:29:21. Silence duration: 00:00:16:02. Specified criteria: Report as Serious if 'Silence during the audio' more than 00:00:01:500.	00:00:16:02	20:58:29:21	20:58:45:23	0078B
4	Serious	Short-term Level exceeds the limit for 00:00:08:00, starting from time: 21:05:20:12. Maximum loudness level: -18.7 LUFS. Specified criteria: Report as Serious if 'Short Term Loudness' more than -20 LUFS.	00:00:08:00	21:05:20:12	21:05:28:12	
5	Serious	Short-term Level exceeds the limit for 00:00:06:00, starting from time: 21:05:41:12. Maximum loudness level: -18.2 LUFS. Specified criteria: Report as Serious if 'Short Term Loudness' more than -20 LUFS.	00:00:06:00	21:05:41:12	21:05:47:12	
6	Serious	Short-term Level exceeds the limit for 00:00:06:00, starting from time: 21:08:56:12. Maximum loudness level: -17.9 LUFS. Specified criteria: Report as Serious if 'Short Term Loudness' more than -20 LUFS.	00:00:06:00	21:08:56:12	21:09:02:12	

7	Serious	Short-term Level exceeds the limit for 00:00:05:00, starting from time: 21:06:22:12. Maximum loudness level: -18.3 LUFS. Specified criteria: Report as Serious if 'Short Term Loudness' more than -20 LUFS.	00:00:05:00	21:06:22:12	21:06:27:12	
8	Serious	Short-term Level exceeds the limit for 00:00:05:00, starting from time: 21:08:06:12. Maximum loudness level: -18.5 LUFS. Specified criteria: Report as Serious if 'Short Term Loudness' more than -20 LUFS.	00:00:05:00	21:08:06:12	21:08:11:12	
9	Serious	Echo with a repetition rate of 923 msec detected in channel 0 for duration 00:00:04:14, starting from time 21:26:41:10. Specified criteria: Report as Serious if Echo detected.	00:00:04:14	21:26:41:10	21:26:45:24	
10	Serious	Echo with a repetition rate of 923 msec detected in channel 0 for duration 00:00:04:14, starting from time 21:42:32:10. Specified criteria: Report as Serious if Echo detected.	00:00:04:14	21:42:32:10	21:42:36:24	
11	Serious	Audio Silence is detected in the stream, starting at time 20:58:03:12. Silence duration: 00:00:04:01. Specified criteria: Report as Serious if 'Silence during the audio' more than 00:00:01:500.	00:00:04:01	20:58:03:12	20:58:07:13	0078B
12	Serious	Short-term Level exceeds the limit for 00:00:04:01, starting from time: 21:06:40:12. Maximum loudness level: -18.7 LUFS. Specified criteria: Report as Serious if 'Short Term Loudness' more than -20 LUFS.	00:00:04:01	21:06:40:12	21:06:44:13	
13	Serious	Short-term Level exceeds the limit for 00:00:04:00, starting from time: 20:53:01:12. Maximum loudness level: -19.5 LUFS. Specified criteria: Report as Serious if 'Short Term Loudness' more than -20 LUFS.	00:00:04:00	20:53:01:12	20:53:05:12	
14	Serious	Short-term Level exceeds the limit for 00:00:04:00, starting from time: 21:05:59:12. Maximum loudness level: -19.8 LUFS. Specified criteria: Report as Serious if 'Short Term Loudness' more than -20 LUFS.	00:00:04:00	21:05:59:12	21:06:03:12	
15	Serious	Short-term Level exceeds the limit for 00:00:04:00, starting from time: 21:08:45:12. Maximum loudness level: -18.7 LUFS. Specified criteria: Report as Serious if 'Short Term Loudness' more than -20 LUFS.	00:00:04:00	21:08:45:12	21:08:49:12	
16	Serious	Short-term Level exceeds the limit for 00:00:03:00, starting from time: 20:53:23:12. Maximum loudness level: -19.9 LUFS. Specified criteria: Report as Serious if 'Short Term Loudness' more than -20 LUFS.	00:00:03:00	20:53:23:12	20:53:26:12	
17	Serious	Short-term Level exceeds the limit for 00:00:03:00, starting from time: 20:56:06:12. Maximum loudness level: -19.9 LUFS. Specified criteria: Report as Serious if 'Short Term Loudness' more than -20 LUFS.	00:00:03:00	20:56:06:12	20:56:09:12	

18	Serious	Short-term Level exceeds the limit for 00:00:03:00, starting from time: 20:56:50:12. Maximum loudness level: -19.9 LUFS. Specified criteria: Report as Serious if 'Short Term Loudness' more than -20 LUFS.	00:00:03:00	20:56:50:12	20:56:53:12	
19	Serious	Short-term Level exceeds the limit for 00:00:03:00, starting from time: 20:56:54:12. Maximum loudness level: -18.9 LUFS. Specified criteria: Report as Serious if 'Short Term Loudness' more than -20 LUFS.	00:00:03:00	20:56:54:12	20:56:57:12	
20	Serious	Short-term Level exceeds the limit for 00:00:03:00, starting from time: 21:01:57:12. Maximum loudness level: -19.9 LUFS. Specified criteria: Report as Serious if 'Short Term Loudness' more than -20 LUFS.	00:00:03:00	21:01:57:12	21:02:00:12	
21	Serious	Short-term Level exceeds the limit for 00:00:03:00, starting from time: 21:02:59:12. Maximum loudness level: -19.8 LUFS. Specified criteria: Report as Serious if 'Short Term Loudness' more than -20 LUFS.	00:00:03:00	21:02:59:12	21:03:02:12	
22	Serious	Short-term Level exceeds the limit for 00:00:03:00, starting from time: 21:03:11:12. Maximum loudness level: -19.9 LUFS. Specified criteria: Report as Serious if 'Short Term Loudness' more than -20 LUFS.	00:00:03:00	21:03:11:12	21:03:14:12	
23	Serious	Short-term Level exceeds the limit for 00:00:03:00, starting from time: 21:05:04:12. Maximum loudness level: -19.6 LUFS. Specified criteria: Report as Serious if 'Short Term Loudness' more than -20 LUFS.	00:00:03:00	21:05:04:12	21:05:07:12	
24	Serious	Short-term Level exceeds the limit for 00:00:03:00, starting from time: 21:05:49:12. Maximum loudness level: -19.2 LUFS. Specified criteria: Report as Serious if 'Short Term Loudness' more than -20 LUFS.	00:00:03:00	21:05:49:12	21:05:52:12	
25	Serious	Short-term Level exceeds the limit for 00:00:03:00, starting from time: 21:06:14:12. Maximum loudness level: -19.9 LUFS. Specified criteria: Report as Serious if 'Short Term Loudness' more than -20 LUFS.	00:00:03:00	21:06:14:12	21:06:17:12	
26	Serious	Audio Silence is detected in the stream, starting at time 21:28:02:11. Silence duration: 00:00:01:13. Specified criteria: Report as Serious if 'Silence during the audio' more than 00:00:01:500.	00:00:01:13	21:28:02:11	21:28:03:24	0078B
27	Serious	Momentary Loudness Level exceeds the limit for 00:00:00:15, starting from time : 21:03:00:22. Maximum loudness level: -13.8 LUFS. Specified criteria: Report as Serious if 'Momentary Loudness' more than -15 LUFS.	00:00:00:15	21:03:00:22	21:03:01:12	

28	Serious	Audio Click in channel (0) is detected, starting from 20:53:38:21. Specified criteria: Report as Serious if Audio Click detected.	00:00:00:01	20:53:38:21	20:53:38:22	0057B
29	Serious	Audio Click in channel (1) is detected, starting from 20:53:38:21. Specified criteria: Report as Serious if Audio Click detected.	00:00:00:01	20:53:38:21	20:53:38:22	0057B
30	Serious	Audio Click in channel (0) is detected, starting from 20:55:53:00. Specified criteria: Report as Serious if Audio Click detected.	00:00:00:01	20:55:53:00	20:55:53:01	0057B
31	Serious	Audio Click in channel (1) is detected, starting from 20:55:53:00. Specified criteria: Report as Serious if Audio Click detected.	00:00:00:01	20:55:53:00	20:55:53:01	0057B
32	Serious	Audio Click in channel (0) is detected, starting from 21:14:35:08. Specified criteria: Report as Serious if Audio Click detected.	00:00:00:01	21:14:35:08	21:14:35:08	0057B
33	Serious	Audio Click in channel (1) is detected, starting from 21:14:35:08. Specified criteria: Report as Serious if Audio Click detected.	00:00:00:01	21:14:35:08	21:14:35:08	0057B
34	Serious	The Momentary/Short Term Loudness in Loudness(EBU) check failed 76 times more in the stream.				

10. BWF Audio (ID=1024,Parent=2)

3 errors, 0 warnings

Information

Sampling Frequency	48000 Hz	
Bit Rate	1536 Kbps	
Audio Channels	2	
LFE Channels	0	
Bits per sample	16	
Average Level	Channel	Level
	0	-99 dBFS
Phase Mismatch	Not Present	
Level Mismatch	Not Present	
Transient Noise	Not Present	
Wow and Flutter	Not Present	
Duration	01:08:13:360	
Pink Noise	Not Present	
White Noise	Not Present	
PPM Meter	Mode	Level
	M6	0
Audio Click	Not Present	

EAS Message	Not Present			
Max Momentary Loudness Level	-99 LUFS			
Max Short-term Loudness Level	-99 LUFS			
EBU Loudness	Program Loudness	Loudness Range	Start	End
	less than -70	0.0	20:51:24:480	21:59:37:834
Repetitive Pattern	Channel		Presence	
	0		Not Present	
	1		Not Present	
Echo	Not Present			
True Peak Level(EBU)	Channel		Level	
	0		-99 dBTP	
	1		-99 dBTP	
Background Noise	Not Present			
Jitter Noise	Not Present			
Audio Clipping	Not Present			
Actual Channel Layout	Can't be determined			
High Frequency Noise	Not Present			
Overmodulation	Not Present			
Audio Dropout	Not Present			
Audio Pop	Not Present			
Audio Crackle	Not Present			
UMID	Info not found			
BWF Version	Info not found			

Audio Quality Errors

#		Description	Duration	Start	End	EBU Code
1	Serious	Audio Silence is detected in the stream, starting at time 20:51:24:12. Silence duration: 01:08:13:09. Specified criteria: Report as Serious if 'Silence in lead-in' more than 00:00:01:500.	01:08:13:09	20:51:24:12	21:59:37:21	0078B
2	Serious	Mute track detected. Specified criteria: Report as Serious if Mute audio detected.				0078B
3	Serious	Program Loudness Level is -99.0 LUFS. Specified criteria: Report as Serious if 'Program Loudness' not between -24 and -22 LUFS.				

----- End of Report -----